

# Transitioning from AutoCAD 2008

Autodesk Official Training Courseware (AOTC)



© 2008 Autodesk, Inc. All rights reserved.

Except as otherwise permitted by Autodesk, Inc., this publication, or parts thereof, may not be reproduced in any form, by any method, for any purpose.

Certain materials included in this publication are reprinted with the permission of the copyright holder.

## Trademarks

The following are registered trademarks or trademarks of Autodesk, Inc., in the USA and other countries: 3DEC (design/logo), 3December, 3December.com, 3ds Max, ActiveShapes, Actrix, ADI, Alias, Alias (swirl design/logo), AliasStudio, Alias|Wavefront (design/logo), ATC, AUGI, AutoCAD, AutoCAD Learning Assistance, AutoCAD LT, AutoCAD Simulator, AutoCAD SQL Extension, AutoCAD SQL Interface, Autodesk, Autodesk Envision, Autodesk Insight, Autodesk Intent, Autodesk Inventor, Autodesk Map, Autodesk MapGuide, Autodesk Streamline, AutoLISP, AutoSnap, AutoSketch, AutoTrack, Backdraft, Built with ObjectARX (logo), Burn, Buzzsaw, CAiCE, Can You Imagine, Character Studio, Cinestream, Civil 3D, Cleaner, Cleaner Central, ClearScale, Colour Warper, Combustion, Communication Specification, Constructware, Content Explorer, Create>what's>Next> (design/logo), Dancing Baby (image), DesignCenter, Design Doctor, Designer's Toolkit, DesignKids, DesignProf, DesignServer, DesignStudio, Design|Studio (design/logo), Design Web Format, Design Your World, Design Your World (design/logo), DWF, DWG, DWG (logo), DWG TrueConvert, DWG TrueView, DXF, EditDV, Education by Design, Exposure, Extending the Design Team, FBX, Filmbox, FMDesktop, Freewheel, GDX Driver, Gmax, Heads-up Design, Heidi, HOOPS, HumanIK, i-drop, iMOUT, Incinerator, IntroDV, Inventor, Inventor LT, Kaydara, Kaydara (design/logo), LocationLogic, Lustre, Maya, Mechanical Desktop, MotionBuilder, Mudbox, NavisWorks, ObjectARX, ObjectDBX, Open Reality, Opticore, Opticore Opus, PolarSnap, PortfolioWall, Powered with Autodesk Technology, Productstream, ProjectPoint, ProMaterials, Reactor, RealDWG, Real-time Roto, Recognize, Render Queue, Reveal, Revit, Showcase, ShowMotion, SketchBook, SteeringWheels, StudioTools, Topobase, Toxik, ViewCube, Visual, Visual Bridge, Visual Construction, Visual Drainage, Visual Hydro, Visual Landscape, Visual Roads, Visual Survey, Visual Syllabus, Visual Toolbox, Visual Tugboat, Visual LISP, Voice Reality, Volo, Wiretap, and WiretapCentral.

The following are registered trademarks or trademarks of Autodesk Canada Co. in the USA and/or Canada and other countries: Backburner, Discreet, Fire, Flame, Flint, Frost, Inferno, Multi-Master Editing, River, Smoke, Sparks, Stone, and Wire.

All other brand names, product names, or trademarks belong to their respective holders.

## Disclaimer

THIS PUBLICATION AND THE INFORMATION CONTAINED HEREIN IS MADE AVAILABLE BY AUTODESK, INC. "AS IS." AUTODESK, INC. DISCLAIMS ALL WARRANTIES, EITHER EXPRESS OR IMPLIED, INCLUDING BUT NOT LIMITED TO ANY IMPLIED WARRANTIES OF MERCHANTABILITY OR FITNESS FOR A PARTICULAR PURPOSE REGARDING THESE MATERIALS.

Published by:  
Autodesk, Inc.  
111 McInnis Parkway  
San Rafael, CA 94903, USA

---

# Contents

- Introduction..... vii**
  
- Chapter 1: AutoCAD 2009 User Interface ..... 1**
  - Lesson: Navigating the AutoCAD Interface ..... 2
    - Overview..... 2
    - About the Quick Access Toolbar ..... 3
    - About the Ribbon ..... 4
    - About the Status Bar..... 9
    - Working with the User Interface..... 12
    - Practice Exercise..... 13
    - Exercise: Navigate the User Interface ..... 15
  - Lesson: Menu Browser ..... 17
    - Overview..... 17
    - Using the Menu Browser..... 18
    - Using the Search Tool..... 21
    - Practice Exercise..... 24
    - Exercise: Use the Menu Browser..... 26
  - Lesson: Quick View ..... 29
    - Overview..... 29
    - Using Quick View Layouts..... 30
    - Using Quick View Drawings..... 32
    - Practice Exercise..... 35
    - Exercise: Use the Quick View Layouts and Quick View Drawings ..... 36
  - Lesson: Quick Properties..... 39
    - Overview..... 39
    - About Quick Properties ..... 40
    - Using Quick Properties..... 42
    - Practice Exercise..... 43
    - Exercise: Use Quick Properties..... 44
  - Lesson: Layer Properties Manager..... 46
    - Overview..... 46
    - About the Layer Properties Manager ..... 47
    - Using the Layer Properties Manager..... 51
    - Practice Exercise..... 54
    - Exercise: Manage Layer Properties ..... 56
  - Chapter Summary..... 58

<b>Chapter 2: Action Macros and Customization</b> .....	<b>59</b>
Lesson: Action Macros .....	60
Overview .....	60
About Action Macros .....	61
Creating Action Macros .....	63
Editing Action Macros .....	66
Practice Exercise .....	69
Guidelines for Using Action Macros .....	71
Exercise: Create and Edit an Action Macro .....	73
Lesson: Customizing the UI .....	77
Overview .....	77
Customizing the Ribbon Panels .....	78
Customizing the Quick Properties Palette .....	84
Customizing Menu Search Tags .....	87
Customizing Quick Access Toolbar .....	90
Practice Exercise .....	93
Exercise: Customize the User Interface .....	94
Chapter Summary .....	101
<b>Chapter 3: AutoCAD 2009 Navigation</b> .....	<b>103</b>
Lesson: View Cube .....	104
Overview .....	104
About the ViewCube .....	105
Using the ViewCube .....	108
Practice Exercise .....	112
Exercise: Use ViewCube to Navigate a 3D Environment .....	113
Lesson: Steering Wheels .....	117
Overview .....	117
About Steering Wheels .....	118
Using Steering Wheels .....	119
Practice Exercise .....	125
Exercise: Use SteeringWheels .....	126
Lesson: ShowMotion .....	129
Overview .....	129
Viewing Presentation Views with ShowMotion .....	130
Creating Views for Presentation with Show Motion .....	133
Practice Exercise .....	136
Exercise: Use ShowMotion .....	137
Chapter Summary .....	141
<b>Chapter 4: Intro to DWFx</b> .....	<b>143</b>
Lesson: Using DWFx .....	144
Overview .....	144
About DWFx .....	145
Using the DWFx Format .....	146
Practice Exercise .....	149
Exercise: Publish DWFx files .....	150
Chapter Summary .....	153

<b>Appendix A: Additional Support and Resources .....</b>	<b>155</b>
Courseware from Autodesk .....	156
Autodesk Services & Support.....	157
Autodesk Subscription.....	158
Autodesk Consulting .....	158
Autodesk Partners .....	158
Autodesk Authorized Training Centers .....	159
Autodesk Student Community .....	159
Autodesk Certification .....	160
Autodesk Store .....	160
Useful Links .....	160

# Acknowledgements

The Autodesk Official Training Courseware (AOTC) team wishes to thank everyone who participated in the development of this project, with special acknowledgement to the authoring contributions and subject matter expertise of Ron Myers and CrWare, LP.

CrWare, LP began publishing courseware for Autodesk Inventor in 2001. Since that time, the company has grown to include full-time curriculum developers, subject matter experts, and technical writers, each with a unique set of industry experiences and talents that enables CrWare to create content that is both accurate and relevant to meeting the learning needs of its readers and customers.

The company's Founder and General Partner, Ron Myers, has been using Autodesk products since 1989. During that time, Ron Myers worked in all disciplines of drafting and design, until 1996 when he began a career as an Applications Engineer, Instructor, and Author. Ron Myers has been creating courseware and other training material for Autodesk since 1996 and has written and created training material for AutoCAD, Autodesk Inventor, AutoCAD Mechanical, Mechanical Desktop, and Autodesk Impression.

# Introduction

Welcome to the *AutoCAD 2009: Transitioning from AutoCAD 2008* Autodesk Official Training Courseware (AOTC), training courseware for use in Authorized Training Center (ATC®) locations, corporate training settings, and other classroom settings.

Although this courseware is designed for instructor-led courses, you can also use it for self-paced learning. The courseware encourages self-learning through the use of the AutoCAD® Help system.

This introduction covers the following topics:

- Course objectives
- Prerequisites
- Using this courseware
- CD contents
- Completing the exercises
- Installing the exercise data files from the CD
- Videos
- Imperial and metric datasets
- Notes, tips, and warnings
- Feedback

This courseware is complementary to the software documentation. For detailed explanations of features and functionality, refer to the Help in the software.

## Course Objectives

After completing this course, you will be able to:

- Navigate the interface using the ribbons, panels and Quick Access Toolbar. Use the Menu Browser to quickly find tools and commands. Use QuickView interface elements to preview and access drawings and layouts. Use Quick Properties and the modeless Layer Properties Manager to improve workflow efficiency.
- Create, edit, and implement Action Macros to speed up repetitive tasks and processes. Customize Ribbons and other interface elements.
- Use the ViewCube and SteeringWheels to easily navigate 3D modeling environments. Use ShowMotion to create cinematic effects and walkthroughs from views.
- Use DWFx file format to share and collaborate design data with clients and peers.

## Prerequisites

This course is designed for the experienced user who is upgrading to the latest version of the software. You should be familiar with:

- The previous release of AutoCAD.
- Microsoft® Windows® 2000, Microsoft® Windows® XP, or Microsoft® Windows® Vista.

## Using This Courseware

The lessons are independent of each other. However, it is recommended that you complete these lessons in the order that they are presented unless you are familiar with the concepts and functionality described in those lessons.

Each chapter contains:

- **Lessons**  
Usually two or more lessons in each chapter.
- **Exercises**  
Practical, real-world examples for you to practice using the functionality you have just learned. Each exercise contains step-by-step procedures and graphics to help you complete the exercise successfully.

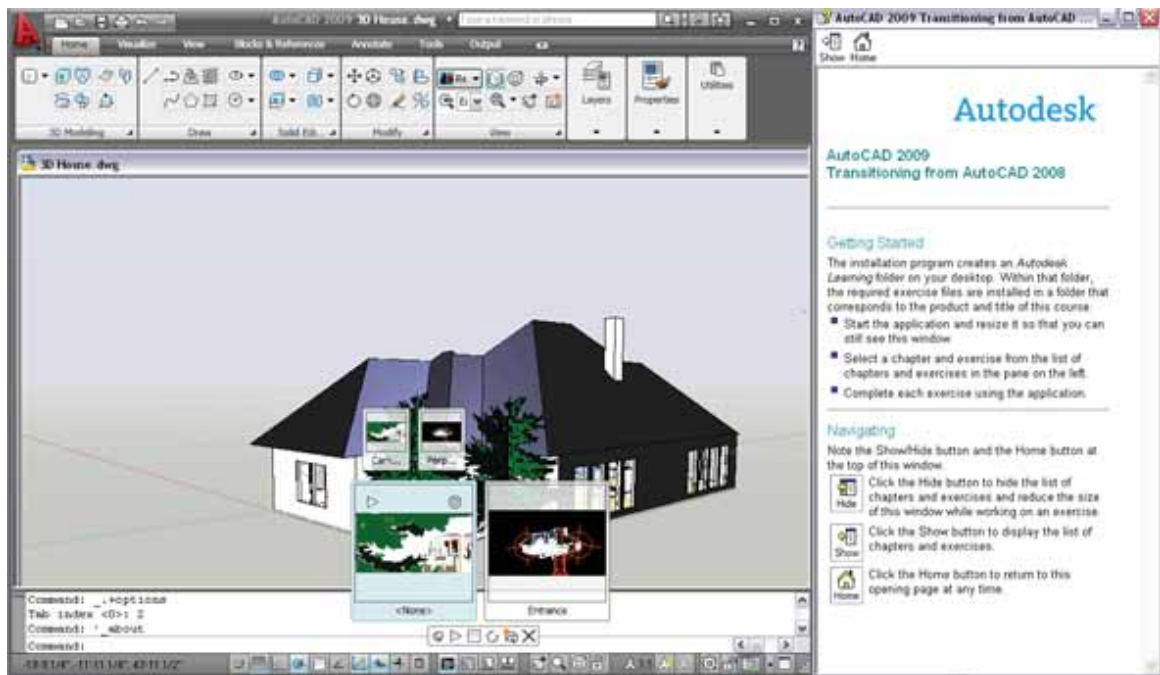
## CD Contents

The CD attached to the back cover of this book contains all the data and drawings you need to complete the exercises in this course.

## Completing the Exercises

You can complete the exercise in two ways: using the book or onscreen.

- **Using the book**  
Follow the step-by-step exercises in the book.
- **Onscreen**  
Click the AOTC - AutoCAD 2009 Transitioning from AutoCAD 2008 icon on your desktop, installed from the CD, and follow the step-by-step exercises onscreen. The onscreen exercises are the same as those in the book. The onscreen version has the advantage that you can concentrate on the screen without having to glance down at your book.



After launching the onscreen exercises, you might need to alter the size of your application window to align both windows.

## Installing the Exercise Data Files from the CD

To install the data files for the exercises:

1. Insert the courseware CD.
2. When the setup wizard begins, follow the instructions on screen to install the data.
3. If the wizard does not start automatically, browse to the root directory of the CD and double-click *Setup.exe*.

Unless you specify a different folder, the exercise files are installed in the following folder:

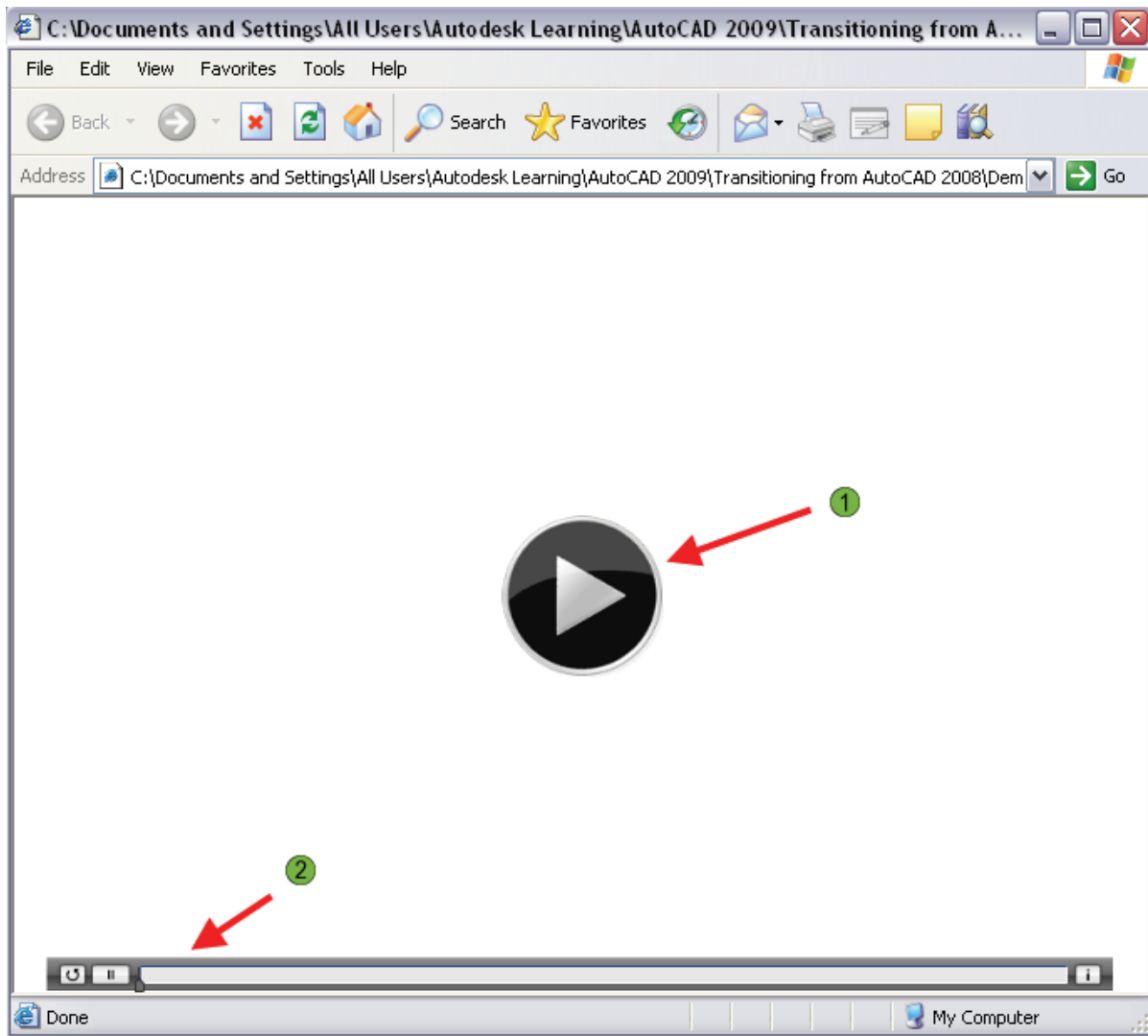
*C:\Documents and Settings\All Users\Autodesk Learning\AutoCAD 2009\Transitioning from AutoCAD 2008.*

After you install the data from the CD, this folder contains all the files necessary to complete each exercise in this course.

## Videos

After you install the contents of the courseware CD, video demonstrations are installed in the *\Demonstration* folder. These videos match to practice exercises located throughout the book. If a practice exercise has a matching video, the name of the file will be noted, and you can access the file at this location.

The videos are published in Adobe® Flash® format. To view a Flash file, you will either need to first install the Adobe Flash player, or ensure that your browser is configured with a Flash player plugin.



- 1 Click the play button in the middle of the window to start the animation.
- 2 Use the player controls to stop, rewind or play back the animation.

## Imperial and Metric Datasets

In exercises that specify units of measurement, alternative files are provided as shown in the following example:

- Open *i\_stair\_settings.dwg* (imperial) or *m\_stair\_settings.dwg* (metric).

In the exercise steps, the imperial value is followed by the metric value in parentheses as shown in the following example:

- For Length, enter **13'2" (4038 mm)**.

For exercises with no specific units of measurement, files are provided as shown in the following example:

- Open *c\_stair\_settings.dwg* (common).

In the exercise steps, the unitless value is specified as shown in the following example:

- For Length, enter **400**.

## Notes, Tips, and Warnings

Throughout this courseware, notes, tips, and warnings are called out for special attention.



Notes contain guidelines, constraints, and other explanatory information.



Tips provide information to enhance your productivity.



Warnings provide information about actions that might result in the loss of data, system failures, or other serious consequences.

## Feedback

We always welcome feedback on Autodesk Official Training Courseware. After completing this course, if you have suggestions for improvements or if you want to report an error in the book or on the CD, please send your comments to [AOTC.feedback@autodesk.com](mailto:AOTC.feedback@autodesk.com).

