

Plumbing Essentials

Autodesk Official Training Courseware (AOTC)



© 2009 Autodesk, Inc. All rights reserved.

Except as otherwise permitted by Autodesk, Inc., this publication, or parts thereof, may not be reproduced in any form, by any method, for any purpose.

Certain materials included in this publication are reprinted with the permission of the copyright holder.

Trademarks

The following are registered trademarks or trademarks of Autodesk, Inc., in the USA and other countries: 3DEC (design/logo), 3December, 3December.com, 3ds Max, ADI, Alias, Alias (swirl design/logo), AliasStudio, AliasWavefront (design/logo), ATC, AUGI, AutoCAD, AutoCAD Learning Assistance, AutoCAD LT, AutoCAD Simulator, AutoCAD SQL Extension, AutoCAD SQL Interface, Autodesk, Autodesk Envision, Autodesk Insight, Autodesk Intent, Autodesk Inventor, Autodesk Map, Autodesk MapGuide, Autodesk Streamline, AutoLISP, AutoSnap, AutoSketch, AutoTrack, Backdraft, Built with ObjectARX (logo), Burn, Buzzsaw, CAiCE, Can You Imagine, Character Studio, Cinestream, Civil 3D, Cleaner, Cleaner Central, ClearScale, Colour Warper, Combustion, Communication Specification, Constructware, Content Explorer, Create>what's>Next> (design/logo), Dancing Baby (image), DesignCenter, Design Doctor, Designer's Toolkit, DesignKids, DesignProf, DesignServer, DesignStudio, DesignStudio (design/logo), Design Web Format, Discreet, DWF, DWG, DWG (logo), DWG Extreme, DWG TrueConvert, DWG TrueView, DXF, Ecotect, Exposure, Extending the Design Team, Face Robot, FBX, Filmbox, Fire, Flame, Flint, FMDesktop, Freewheel, Frost, GDX Driver, Gmax, Green Building Studio, Heads-up Design, Heidi, HumanIK, IDEA Server, i-drop, ImageModeler, iMOUT, Incinerator, Inferno, Inventor, Inventor LT, Kaydara, Kaydara (design/logo), Kynapse, Kynogon, LandXplorer, LocationLogic, Lustre, Matchmover, Maya, Mechanical Desktop, Moonbox, MotionBuilder, Movimento, Mudbox, NavisWorks, ObjectARX, ObjectDBX, Open Reality, Opticore, Opticore Opus, PolarSnap, PortfolioWall, Powered with Autodesk Technology, Productstream, ProjectPoint, ProMaterials, RasterDWG, Reactor, RealDWG, Real-time Roto, REALVIZ, Recognize, Render Queue, Retimer,Reveal, Revit, Showcase, ShowMotion, SketchBook, Smoke, Softimage, SoftimageXSI (design/logo), SteeringWheels, Stitcher, Stone, StudioTools, Topobase, Toxik, TrustedDWG, ViewCube, Visual, Visual Construction, Visual Drainage, Visual Landscape, Visual Survey, Visual Toolbox, Visual LISP, Voice Reality, Volo, Vtour, Wire, Wiretap, WiretapCentral, XSI, and XSI (design/logo).

The following are registered trademarks or trademarks of Autodesk Canada Co. in the USA and/or Canada and other countries: Backburner, Multi-Master Editing, River, and Sparks.

The following are registered trademarks or trademarks of Moldflow Corp. in the USA and/or other countries: Moldflow MPA, MPA (design/logo), Moldflow Plastics Advisers, MPI, MPI (design/logo), Moldflow Plastics Insight, MPX, MPX (design/logo), Moldflow Plastics Xpert.

All other brand names, product names, or trademarks belong to their respective holders.

Disclaimer

THIS PUBLICATION AND THE INFORMATION CONTAINED HEREIN IS MADE AVAILABLE BY AUTODESK, INC. "AS IS." AUTODESK, INC. DISCLAIMS ALL WARRANTIES, EITHER EXPRESS OR IMPLIED, INCLUDING BUT NOT LIMITED TO ANY IMPLIED WARRANTIES OF MERCHANTABILITY OR FITNESS FOR A PARTICULAR PURPOSE REGARDING THESE MATERIALS.

Published by:
Autodesk, Inc.
111 McInnis Parkway
San Rafael, CA 94903, USA

Contents

- Introduction..... vii**

- Chapter 1: Getting Started 1**
 - Lesson: Loading Base Drawings for a Project..... 2
 - Overview..... 2
 - Workspaces 3
 - AutoCAD MEP Projects 4
 - Project File Types..... 5
 - Workflow in a Project 8
 - Spatial Organization of a Project 8
 - Guidelines for Loading Base Drawings into Projects..... 10
 - Exercise: Load Base Drawings for a Project..... 13
 - Lesson: Drawing a Schematic Diagram 24
 - Overview..... 24
 - Schematic Diagrams in AutoCAD MEP..... 25
 - Schematic Symbols..... 25
 - Schematic Lines 26
 - Styles 27
 - Connecting Schematic Lines and Symbols..... 27
 - Schematic Systems 30
 - Schematic System Groups 30
 - Guidelines for Creating a Schematic Diagram..... 31
 - Exercise: Draw a Schematic Diagram 34
 - Lesson: Drawing Isometric Schematics 53
 - Overview..... 53
 - Isometric Orientation 54
 - Isometric Symbols 58
 - Isometric Lines 60
 - Guidelines for Drawing Isometric Schematics..... 60
 - Exercise: Draw an Isometric Schematic 62
 - Chapter Summary..... 81

- Chapter 2: Modeling a Plumbing System 83**
 - Lesson: Placing Plumbing Equipment 84
 - Overview..... 84
 - Plumbing Fixtures and Equipment 85
 - Guidelines for Placing Plumbing Fixtures and Equipment 89
 - Exercise: Add Plumbing Fixtures & Equipment..... 91

Lesson: Adding Plumbing Lines, Valves, and Fittings	99
Overview	99
About Plumbing lines.....	100
About Fittings.....	102
Guidelines for Creating a Plumbing Model	104
Exercise: Add Plumbing Lines, Valves and Fittings	105
Chapter Summary	117
Chapter 3: Analyzing Your Plumbing System	119
Lesson: Sizing Plumbing Systems	120
Overview	120
Sizing a Plumbing System	121
Process of Sizing Plumbing Systems.....	124
Guidelines for Sizing Plumbing Systems.....	125
Exercise: Size a Plumbing System	126
Lesson: Checking Plumbing Connections.....	130
Overview	130
Verifying Object Connections	131
Guidelines for Creating Valid Connections in a Plumbing Model.	133
Exercise: Check Plumbing Connections.....	134
Chapter Summary	137
Chapter 4: Generating Plumbing Documentation.....	139
Lesson: Annotating a Plumbing Model	140
Overview	140
About Labels.....	141
About Tags.....	145
Guidelines for Annotating a Plumbing Model.....	148
Exercise: Annotate a Plumbing Model.....	150
Lesson: Creating and Editing Schedules	159
Overview	159
About Schedule Tables	160
About Schedule Data	161
Guidelines for Creating Schedule Tables.....	162
Exercise: Create and Edit Schedules	164
Chapter Summary	167
Chapter 5: Outputting Construction Documents.....	169
Lesson: Creating and Managing Plotting Sheets	170
Overview.....	170
About Plotting Sheets	171
About a Sheet List	175
Guidelines for Creating and Managing Plotting Sheets.....	176
Exercise: Use Sheets	177

Lesson: Publishing Project Drawings	181
Overview	181
About Plotting and Publishing	182
Publishing Options	184
Guidelines for Plotting and Publishing Drawings.....	190
Exercise: Publish and Review Project Drawings	192
Lesson: Transmitting and Archiving	194
Overview	194
About Transmitting.....	195
About Archiving	197
Transmittal and Archival Setups.....	198
Exercise: Transmit Project Drawings	201
Chapter Summary.....	203

Appendix A: Additional Support and Resources 205

Courseware from Autodesk	206
Autodesk Services & Support.....	207
Autodesk Subscription.....	208
Autodesk Consulting	208
Autodesk Partners	208
Autodesk Authorized Training Centers	209
Autodesk Student Community	209
Autodesk Certification	210
Autodesk Store	210
Useful Links	210

Introduction

Welcome to the *AutoCAD MEP 2009: Plumbing Essentials* Autodesk Official Training Courseware (AOTC), a training course for use in Authorized Training Center (ATC®) locations, corporate training settings, and other classroom settings.

Although this courseware is designed for instructor-led courses, you can also use it for self-paced learning. The courseware encourages self-learning through the use of the AutoCAD® MEP Help system.

This introduction covers the following topics:

- Course objectives
- Prerequisites
- Using this courseware
- DVD contents
- Installing the exercise data files from the DVD
- Imperial and metric datasets
- Notes, tips, and warnings
- Feedback

This courseware is complementary to the software documentation. For detailed explanations of features and functionality, refer to the Help in the software.

Course Objectives

After completing this course, you will be able to:

- Load base drawings, create views, and create a schematic drawing.
- Add plumbing equipment, plumbing lines, valves, and fittings.
- Size plumbing systems and check connections.
- Annotate a plumbing model and create and edit schedules.
- Create and manage plotting sheets, and publish, transmit, and archive project drawings.

Prerequisites

This course is designed for building professionals and AutoCAD® users. The course materials cover the basics of AutoCAD MEP used to create a plumbing system and draft details based on plumbing requirements.

It is recommended that you have a working knowledge of:

- Building engineering terms and processes.
- Basic AutoCAD skills, including the use of snap mode, ortho mode, object snap tracking, dynamic input, the Copy command, the Mirror command, and the Trim command.
- Microsoft® Windows® 2000 or Microsoft® Windows® XP.

Using This Courseware

The lessons are independent of each other. However, it is recommended that you complete these lessons in the order that they are presented unless you are familiar with the concepts and functionality described in those lessons.

Each chapter contains:

- **Lessons**
Usually two or more lessons in each chapter.
- **Exercises**
Practical, real-world examples for you to practice using the functionality you have just learned. Each exercise contains step-by-step procedures and graphics to help you complete the exercise successfully.

DVD Contents

The DVD attached to the back cover of this book contains all the data and drawings you need to complete the exercises in this course.

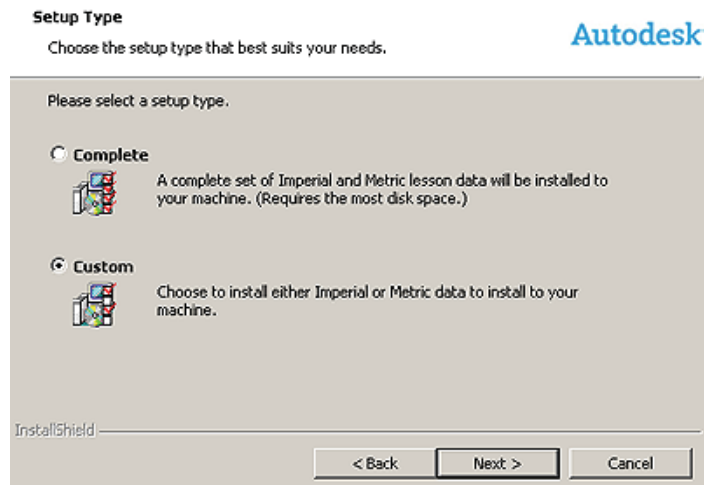
Installing the Exercise Data Files from the DVD

To install the data files for the exercises:

1. Insert the courseware DVD.
2. When the setup wizard begins, follow the instructions on screen to install the data.
3. If the wizard does not start automatically, browse to the root directory of the DVD and double-click *Setup.exe*.

4. The default install setting will install all of the courseware data to your hard drive. To install only Imperial or Metric data, on the Setup Type dialog box:

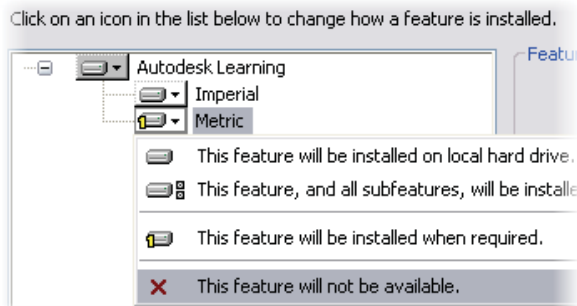
- Select Custom.



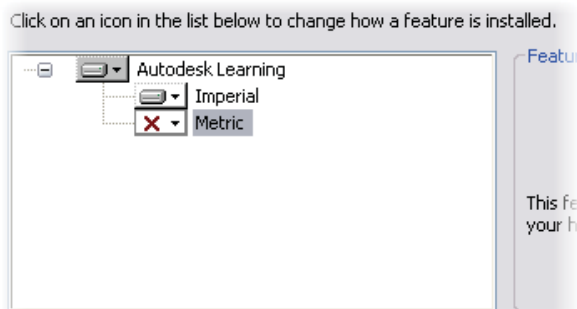
- Select Next.

5. On the Custom Setup dialog box:

- Select the dropdown menu for the data that you do not wish to install.



- Select This feature will not be available.



- Click Next.

On the Ready to Install the Program dialog box:

- Click Install.

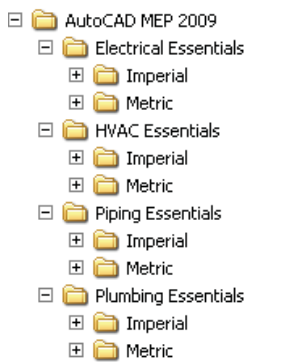
Unless you specify a different folder, the exercise files are installed in the following folder:

C:\Documents and Settings\All Users\Autodesk Learning\AutoCAD MEP 2009\Plumbing Essentials

After you install the data from the DVD, this folder contains all the files necessary to complete each exercise in this course.

Imperial and Metric Datasets

Each exercise can be executed using either Imperial or Metric data. The data is stored in either an Imperial or Metric folder as shown in the following image:



At the beginning of each exercise, you locate and open the lesson project folder. A Metric version of the Research Lab project is in the Metric folder and an Imperial version of the Research Lab project is in the Imperial folder.

In the exercise steps, the imperial value is followed by the metric value in parentheses as shown in the following example:

- For Length, enter **13'-2" (4038 mm)**.

In the exercise steps, the unitless value is specified as shown in the following example:

- For Length, enter **400**.

Notes, Tips, and Warnings

Throughout this courseware, notes, tips, and warnings are called out for special attention.



Notes contain guidelines, constraints, and other explanatory information.



Tips provide information to enhance your productivity.



Warnings provide information about actions that might result in the loss of data, system failures, or other serious consequences.

Feedback

We always welcome feedback on Autodesk Official Training Courseware. After completing this course, if you have suggestions for improvements or if you want to report an error in the book or on the DVD, please send your comments to AOTC.feedback@autodesk.com.